

# MONTHLY MEMBERSHIP PROGRESS REPORT

LOCATION INDIA

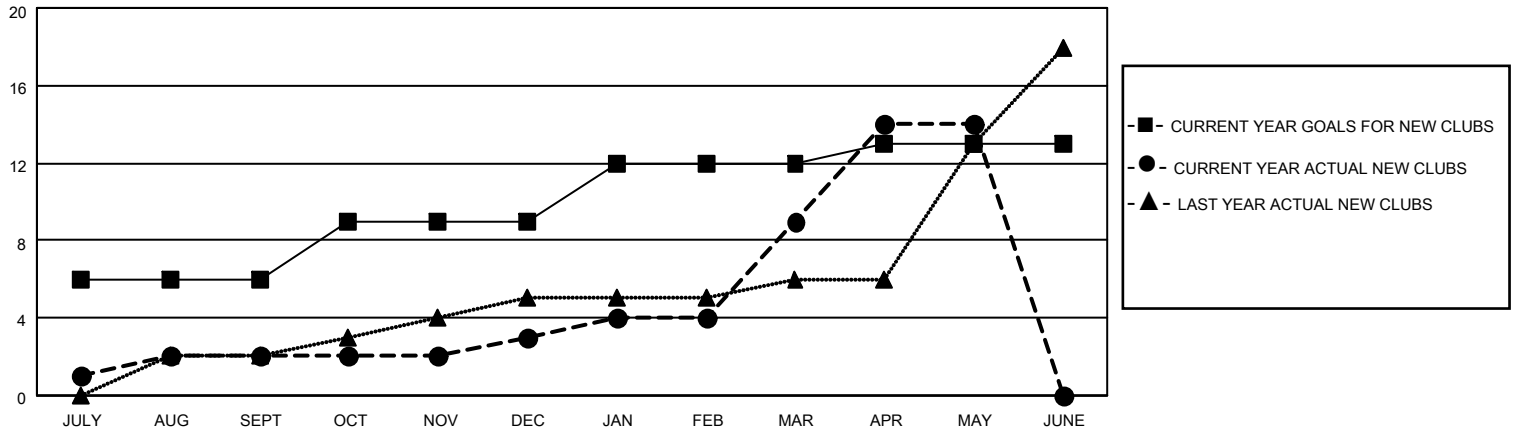
District 3233E2

Results as of: 5/31/2022

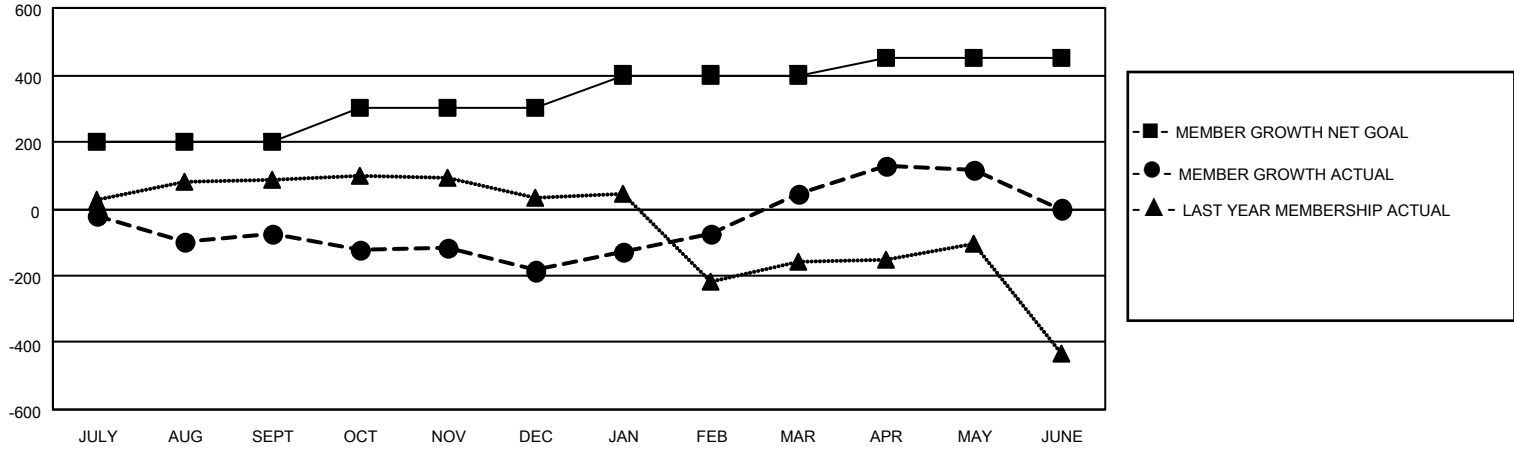
Clubs			
RESULTS FOR 2021-2022			
QUARTER	NEW CLUB GOAL	NEW CLUBS	DROPPED CLUBS
JULY/AUG/SEPT	6	2	19
OCT/NOV/DEC	3	1	5
JAN/FEB/MAR	3	6	2
APR/MAY/JUNE	1	5	0

Members			
RESULTS FOR 2021-2022			
QUARTER	MEMBER GROWTH NET GOAL	MEMBER GROWTH ACTUAL	DROPPED MEMBERS ACTUAL (including transfers)
JULY/AUG/SEPT	200	220	282
OCT/NOV/DEC	100	155	225
JAN/FEB/MAR	100	353	77
APR/MAY/JUNE	50	204	108

**GOALS AND ACTUAL NEW CLUBS CUMULATIVE**



**GOALS AND ACTUAL MEMBERS CUMULATIVE**



**DROPPED CLUBS: 26**

110 CLUBS OF 225 ADDED 1 OR MORE NEW MEMBERS

GENDER DISTRIBUTION

MALE	4,064 (71.20%)
FEMALE	1,641 (28.75%)
NON BINARY	0 (0.00%)
PREFER NOT TO ANSWER	3 (0.05%)

DROPPED MEMBERS

[CLICK HERE FOR CUMULATIVE MEMBERSHIP DATA](#)

DECEASED	15
CLUB CANCELLED	202
OTHER	476
<b>TOTAL</b>	<b>693</b>

TOTAL FAMILY UNIT MEMBERS 2,323

FAMILY MEMBERS PAYING HALF DUES 1,299